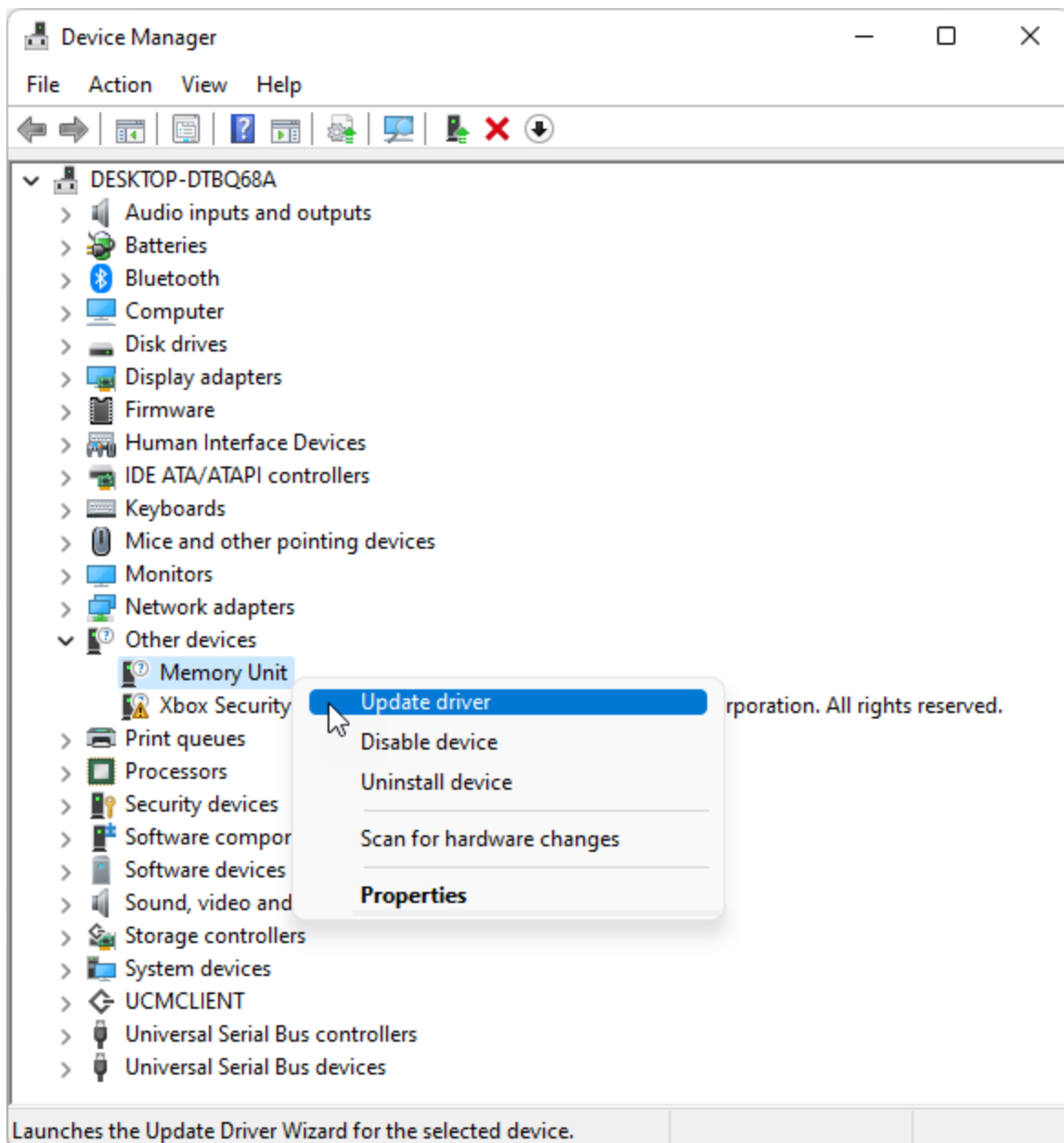


Xbox 360 Memory Unit Driver Installation Instructions

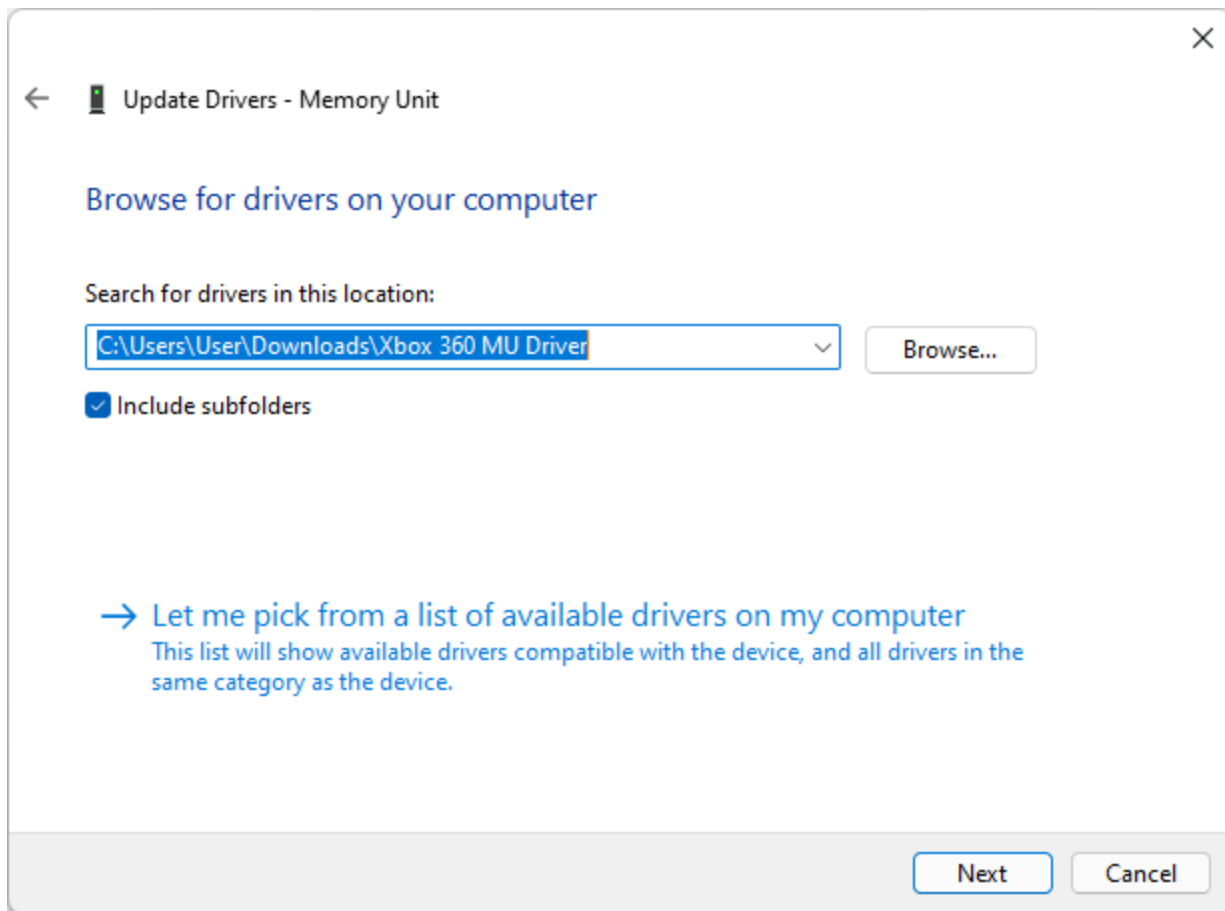
When you connect an Xbox 360 memory unit to your computer, it initially appears in "Other devices" with question mark and warning icons in Device Manager. This driver resolves these issues and makes it appear as a disk drive that FATXplorer will recognize. Here is how to properly install the driver:

Step 1: Temporarily disable driver signature enforcement. To do this, follow [these steps](#) (follow the steps under Option One).

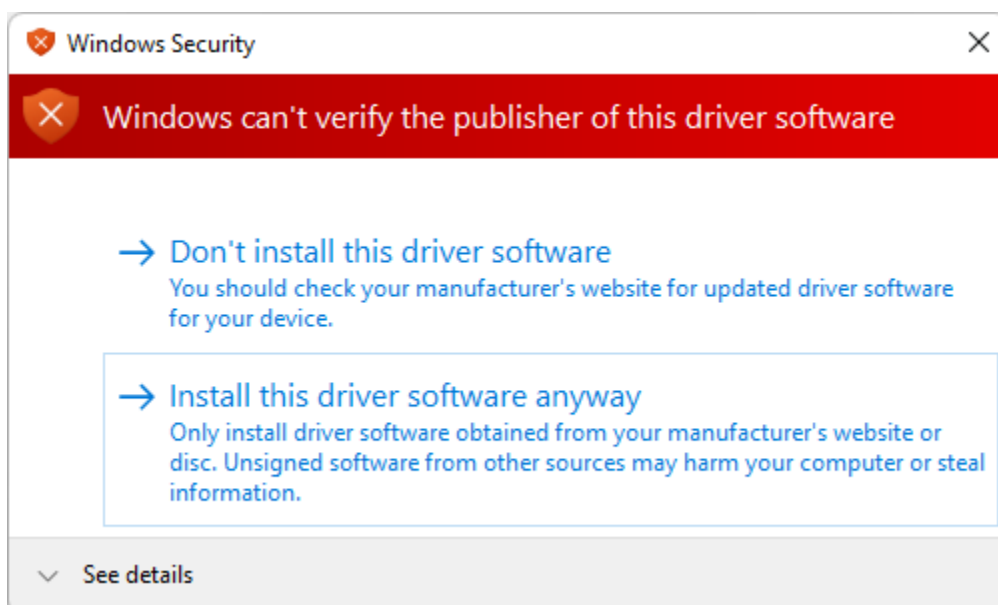
Step 2: Connect the memory unit to your computer and open Device Manager. Right-click on "Memory Unit" and select "Update driver":



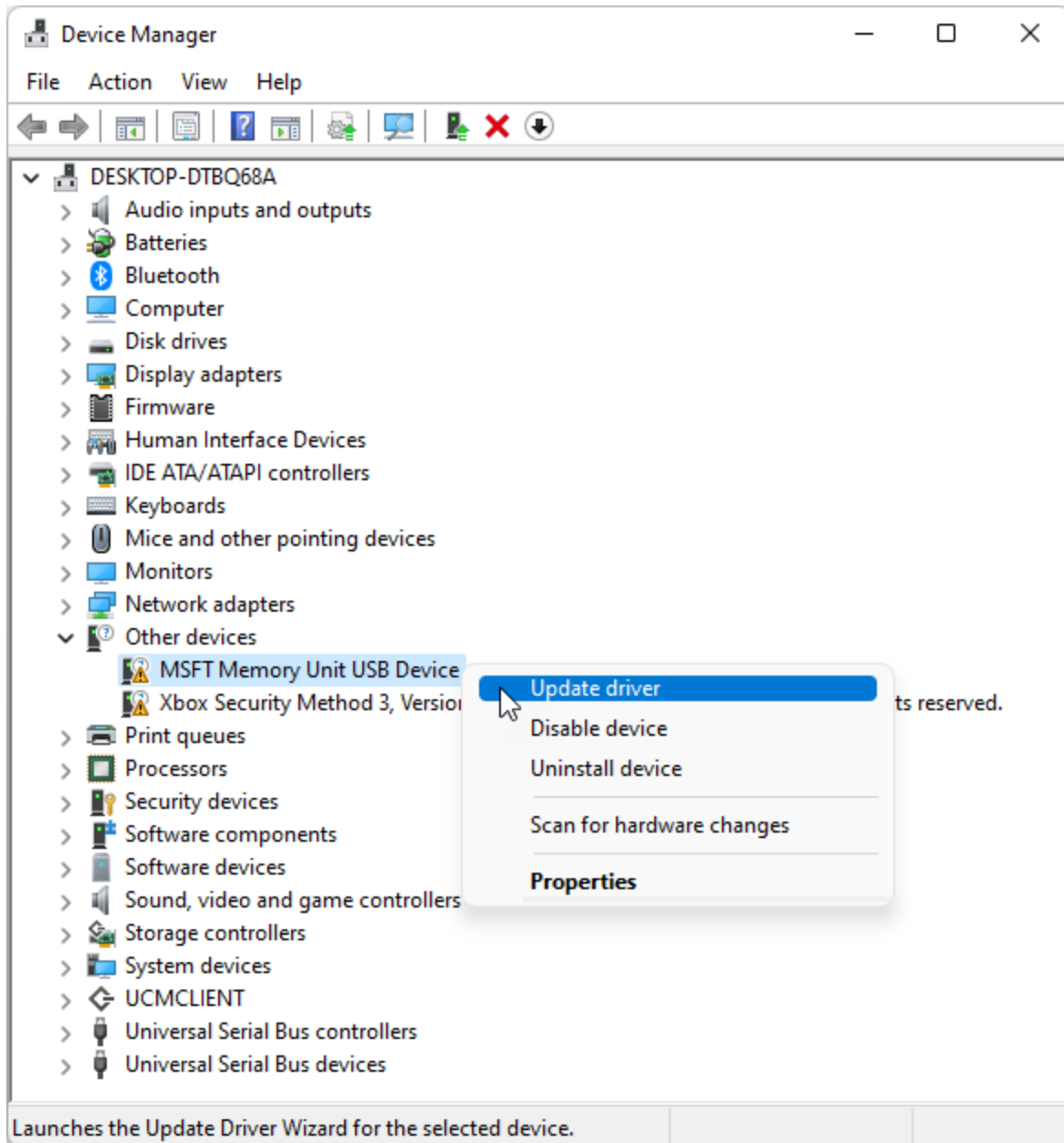
Step 3: Browse to the extracted driver files:



Step 4: Choose "Install this driver software anyway":



Step 5: The driver will have been successfully installed, but you will still see 2 warning icons/devices in Device Manager. For these remaining 2 devices, repeat the steps starting from Step 2.



With no warning icons/devices left in Device Manager (that have Memory Unit or Xbox in the name), you are done and FATXplorer will now recognize your memory unit!

FAQ

Q: When I connect my memory unit, Windows asks to format it. Should I?

A: NO! You will wipe your data!

Q: Why do I have to temporarily disable driver signature enforcement?

A: This driver is not an official part of FATXplorer and is made by a third party. The third party decided not to sign it. Driver signature enforcement will re-enable automatically the next time you reboot your computer, and the memory unit driver will remain installed/functional.

Q: Will there be any updates to this driver?

A: It doesn't appear there have been any updates since 2006, so it's safe to say this is the final version.

Q: How does this driver relate to the driver FATXplorer uses to mount devices?

A: FATXplorer's mounting driver is completely separate from this driver and they do not interact in any way.

Q: Why doesn't FATXplorer automatically install this driver?

A: Very few people use memory units with FATXplorer and it would be pointless to install a driver that 99% of people would never utilize.

Q: What Windows versions does this driver work on?

A: This driver has been tested on Windows versions up to Windows 11 and it appears to work fine on all of them.